



## ABRASIVE CAST SAFETY TREADS AND NOSINGS

### CAST TREADS AND NOSINGS PROVIDE:

Protection of the step edge from damage. Safe, anti slip walking surface. Visual contrast makes step edge easier to see.

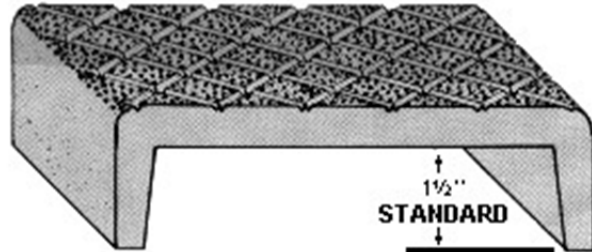
### FEATURES:

- Maximum Durability in Rough Use
- Indoor or Outdoor Use
- Resistant to Unusual Corrosive Environment
- New Construction or Renovation
- Anti-slip Properties
- Ready to Install Convenience

### ABRASIVE CASTINGS SPECIFICATION:

- Provide Alumogrit® type 117, size\_\_\_\_, safety treads/nosings as manufactured by Wooster Products Inc. for interior and exterior stairs.
- Abrasive shall be #20 virgin grain Aluminum Oxide ( $Al_2O_3$ ) abrasive, integrally cast into the walking surface to a minimum depth of 1/32 inch.
- Safety nosings up to 6" deep with cross-hatched surface being installed into wet concrete shall have a "Marker Line" (Trademark 3571602) along the back edge.
- Concealed type anchors shall be slotted rivet type, integrally cast into the body of the nosing a minimum of 3/8 inch. (Not mushroom type)
- Cast metals used shall conform to the following specification:  
Alumogrit® (Abrasive cast aluminum): No. 43 prime and secondary ingot; low copper content; corrosion resistant.
- Any holes or countersinks shall be machine made. Screwheads shall not protrude above tread surface.
- All cast products shall have shot blasted finish.
- Cross hatching and fluting shall be 1/16 inch deep minimum and shall be clean and well defined.
- Treads and nosings shall be manufactured, packed and shipped so as to arrive at the job site in good condition.
- Nosings shall terminate not more than 4" from ends of steps for poured concrete stairs; for concrete filled steel pan stairs, nosings shall be full length of steps less 1/8 inch clearance.

### FOR STRUCTURAL USE



### TYPE 117

Double Nose – 1 1/2" standard  
DRAWING NOT TO SCALE

Double nose tread, reversible. Chief use: as structural tread fastened to carrier angles on stringers.

### GUIDELINES FOR THE INSTALLATION OF METAL SAFETY TREADS OR NOSINGS INTO NEW CONCRETE OR STEEL PAN FILLED STAIRS:

The use of very large aggregate in the concrete mix may make placement of the safety nosing difficult. Safety nosing placement may be difficult in concrete with very low slump. Place concrete into the stair forms or steel pans as quickly as possible; schedule pour so as to install the metal safety nosings quickly before the initial set of concrete occurs. Puddle the concrete, tamp the safety nosings to insure proper concrete formation around the anchors. Remove protective tape (if used) as soon as practical. Order nosings or treads well in advance of the pour or installation date. Close stairway after pour; permit no use for 24 hours.

**WOOSTER PRODUCTS INC., 1000 SPRUCE ST., WOOSTER, OH 44691**

**Toll Free: 800-321-4936**

**Phone: 330-264-2844**

**Fax: 330-262-4151**

**Website: <http://www.wooster-products.com>**

**E-mail: [sales@wooster-products.com](mailto:sales@wooster-products.com)**