



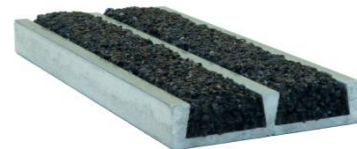
SUPERGRIT® SAFETY TREADS

SUPERGRIT® TREADS PROVIDE:

A heat-treated, corrosion resistant, extruded aluminum base with satin lacquered finish. The use of diamond hard aluminum oxide in the filler assures long tread life under heavy pedestrian traffic use. Supergrit® is appropriate for both inside and outside use.

SUPERGRIT® FEATURES:

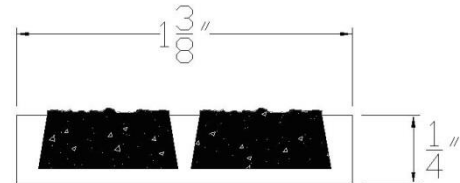
- Extruded aluminum base - abrasive filler
- Lengths to order - up to 12'0" in one piece
- Lengths over maximum to be made in equal sections
- Non-combustible
- High content of aluminum oxide abrasive
- 11 standard colors - colors extend throughout filler
- Protective tape available at additional cost
- Special sealant for wood or saltwater applications available at additional cost



SUPERGRIT® SPECIFICATION:

- Provide Supergrit® type **610** safety nosings as manufactured by Wooster Products Inc. for interior and exterior stairs.
- Tread base shall be type 6063-T5 extruded aluminum.
- Anti-slip filler shall contain not less than 65% virgin grain Aluminum Oxide (Al_2O_3) abrasive.
- Treads shall be nonflammable and noncombustible as tested under Federal Test Method Standard No. 501a. Method 6411.
- Type of anchor shall be specified.
- Treads may terminate 4" from ends of steps for ease of cleaning or may be full length of steps less 1/8" clearance.
- Color shall extend uniformly throughout the filler; black color will be furnished if no other color is specified.
- Protective tape available upon request, at an extra cost. Protective tape should be removed as soon as possible once installed.
- Nosings shall finish flush with the top of the traffic surface.

Type 610



1 3/8" wide, 1/4" thick

DRAWING NOT TO SCALE

Maximum length is 12'0".

The type 610 is available with the following types of anchors: Tapcons, Wood Screws, Machine Screws, Screws & Expansion Shields

GUIDELINES FOR THE INSTALLATION OF METAL SAFETY TREADS OR NOSINGS INTO NEW CONCRETE OR STEEL PAN FILLED STAIRS:

- The use of very large aggregate in the concrete mix may make placement of the safety nosing difficult.
- Safety nosing placement may be difficult in concrete with very low slump.
- Place concrete into the stair forms or steel pans as quickly as possible; schedule pour so as to install the metal safety nosings quickly before the initial set of concrete occurs.
- Puddle the concrete, tamp the safety nosings to insure proper concrete formation around the anchors.
- Remove protective tape (if used) as soon as practical.
- Order nosings or treads well in advance of the pour or installation date.

WOOSTER PRODUCTS INC, 1000 SPRUCE ST., WOOSTER, OH 44691

Toll Free: 800-321-4936

Phone: 330-264-2844

Fax: 330-262-4151

Website: <http://www.woosterproducts.com>

E-mail: sales@wooster-products.com