



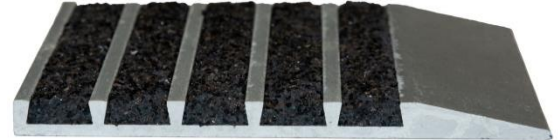
STAIRMASTER® SAFETY RENOVATION TREADS

STAIRMASTER® TREADS PROVIDE:

A convenient, easy to install method of permanently repairing damaged or worn stair treads. The use of heat treated, corrosion resistant aluminum with a diamond hard aluminum oxide in the filler assures long tread life under heavy pedestrian traffic use. Stairmaster® is appropriate for both inside and outside use.

STAIRMASTER® FEATURES:

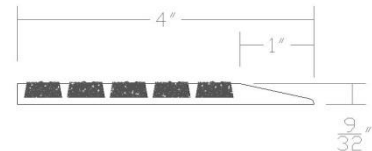
- Extruded aluminum base - abrasive filler
- Lengths to order – most styles up to 12'0" max
- Types 333, 6100, 511, and 511SN up to 8'0" max
- High content of aluminum oxide abrasive
- 11 standard colors - Colors extend throughout filler
- Two-tone treads with contrasting color available
- Noncombustible



STAIRMASTER® SPECIFICATION:

- Provide Stairmaster® type **540** safety renovation treads as manufactured by Wooster Products Inc. for interior and exterior stair renovation.
- Tread base shall be type 6063-T5 extruded aluminum.
- Anti-slip filler shall contain not less than 65% virgin grain Aluminum Oxide/Silicon Carbide abrasive.
- Treads shall be noncombustible as tested under Federal Test Method Standard No. 501a. Method 6411
- Type of anchor shall be specified.
- Treads may terminate 4" from ends of steps for ease of cleaning or may be full length of steps less 1/8" clearance.
- Color shall extend uniformly throughout the filler; black color will be furnished if no other color is specified.

Type 540



4" wide, 9/32" thick, no nose, beveled back
Available with beveled or square ends

DRAWING NOT TO SCALE

Maximum length is 12'0".

The type 540 is available with the following types
of anchors: Tapcons, Wood Screws, Machine
Screws, Screws & Expansion Shields

GUIDELINES FOR THE INSTALLATION OF WOOSTER SAFETY STAIR TREADS OVER EXISTING STAIRS:

An application of leveling compound should be made over dished or worn stairs to provide a level bearing surface for the safety stair treads. Smooth steps such as marble, terrazzo, tile, etc. should be roughed up to insure good adhesion. All other surfaces need only to be thoroughly cleaned. Mix compound in a mortar pan and trowel to a feather edge with a board held against the front edge of the step. (See drum for complete mixing instructions.) Compound dries in 2 - 4 hours.

The treads may be fastened down using Tapcon screws. Drill a pilot hole using a 5/32" drill bit. Coat step and back of tread with Wooster Rubber-Based Construction Adhesive. Place the tread in position and drive anchor through tread with a phillips screwdriver. The treads may also be fastened with screws and lead expansion shields: Using tread as a template, mark holes and drill using a 5/16" carbide tipped drill bit. Dip each shield in construction adhesive and insert into holes. Apply adhesive to step and back of safety tread. Place the step in position. Fasten down with flat head screws. Do not use power tools to tighten screws at risk of stripping threads. For wood stairs, follow above instructions using wood screws with a drilled pilot hole. For metal stairs, follow above instructions using machine screws and nuts.

After treads have been fastened, the stairway can be given a brand new look by painting the risers, stringers, and around the treads.

WOOSTER PRODUCTS INC, 1000 SPRUCE ST., WOOSTER, OH 44691

Toll Free: 800-321-4936

Phone: 330-264-2844

Fax: 330-262-4151

Website: <http://www.woosterproducts.com>

E-mail: sales@wooster-products.com