



# ABRASIVE CAST SAFETY TREADS AND NOSINGS

## CAST TREADS AND NOSINGS PROVIDE:

Safe, anti slip walking surface. Protection of the step edge from damage. Visual contrast makes step edge easier to see.

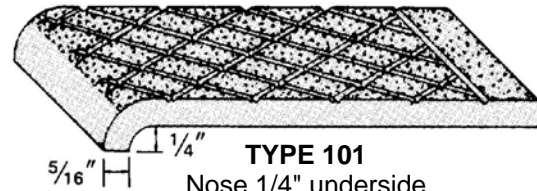
## FEATURES:

- Maximum Durability in Rough Use
- Indoor or Outdoor Use
- Resistant to Corrosive Environment
- New Construction or Renovation
- Anti-slip Properties
- Ready to Install Convenience

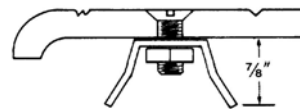
## ABRASIVE CASTINGS SPECIFICATION:

- Provide Alumogrit® or Ferrogrit® type **101**, size \_\_\_\_\_, safety treads/nosings as manufactured by Wooster Products Inc. for interior and exterior stairs.
- Abrasive shall be #20 virgin grain Aluminum Oxide (AL<sub>2</sub>O<sub>3</sub>) abrasive, integrally cast into the walking surface to a minimum depth of 1/32 inch.
- Safety nosings up to 6" deep with cross-hatched surface being installed into wet concrete shall have a "Feature Strip" (Trademark 3571602) along the back edge.
- Concealed type anchors shall be slotted rivet type, integrally cast into the body of the nosing a minimum of 3/8 inch. (Not mushroom type)
- Cast metals used shall conform to the following specification:  
 Alumogrit® (Abrasive cast aluminum): No. 43 secondary ingot; low copper content; corrosion resistant.  
 Ferrogrit® (Abrasive cast iron): Class 20 iron; high silicon; machinable; hypereutectic.
- Any holes or countersinks shall be machine made. Screwheads shall not protrude above tread surface.
- All metal types shall have shot blasted finish; Ferrogrit® treads shall have one coat shop-black paint.
- Cross hatching and fluting shall be 1/16 inch deep minimum and shall be clean and well defined.
- Nosings shall terminate not more than 4" from ends of steps for poured concrete stairs; for concrete filled steel pan stairs, nosings shall be full length of steps less 1/8 inch clearance.

## FOR POURED CONCRETE



**TYPE 101**  
 Nose 1/4" underside  
 Standard thickness - 5/16"  
 Standard widths - 3", 4" and 6"  
 DRAWING NOT TO SCALE



Wing type anchor - Steel wing anchors, bolts, and nuts are furnished for field attachment into factory-drilled and countersunk holes, prior to tread installation. Standard spacing is 3" from ends on approx 12" centers. In single, staggered or double row, according to tread width.

**LENGTHS:** Lengths are to order up to 8'6" maximum in one piece in Alumogrit®, up to 6'0" in one piece for Ferrogrit®. Lengths over maximum will be made in equal sections

## GUIDELINES FOR THE INSTALLATION OF METAL SAFETY TREADS OR NOSINGS INTO NEW CONCRETE OR STEEL PAN FILLED STAIRS:

- The use of very large aggregate in the concrete mix may make placement of the safety nosing difficult. Safety nosing placement may be difficult in concrete with very low slump.
- Place concrete into the stair forms or steel pans as quickly as possible; schedule pour so as to install the metal safety nosings quickly before the initial set of concrete occurs.
- Puddle the concrete, tamp the safety nosings to insure proper concrete formation around the anchors.
- Remove protective tape (if used) as soon as practical.
- Order nosings or treads well in advance of the pour or installation date.
- Close stairway after pour; permit no use for 24 hours.

**WOOSTER PRODUCTS INC, 1000 SPRUCE ST., WOOSTER, OH 44691**

**Toll Free: 800-321-4936 Phone: 330-264-2844 Fax: 330-262-4151**

**Website: <http://www.wooster-products.com> E-mail: [sales@wooster-products.com](mailto:sales@wooster-products.com)**