



ABRASIVE CAST SAFETY TREADS AND NOSINGS

CAST TREADS AND NOSINGS PROVIDE:

Safe, anti slip walking surface. Protection of the step edge from damage. Visual contrast makes step edge easier to see.

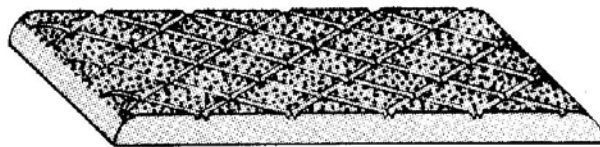
FEATURES:

- Maximum Durability in Rough Use
- Indoor or Outdoor Use
- Resistant to Corrosive Environment
- New Construction or Renovation
- Anti-slip Properties
- Ready to Install Convenience

ABRASIVE CASTINGS SPECIFICATION:

- Provide Alumogrit® or Ferrogrit® type **110**, size _____, safety treads/nosings as manufactured by Wooster Products Inc. for interior and exterior stairs.
- Abrasive shall be #20 virgin grain Aluminum Oxide (AL₂O₃) abrasive, integrally cast into the walking surface to a minimum depth of 1/32 inch.
- Safety nosings up to 6" deep with cross-hatched surface being installed into wet concrete shall have a "Feature Strip" (Trademark 3571602) along the back edge.
- Concealed type anchors shall be slotted rivet type, integrally cast into the body of the nosing a minimum of 3/8 inch. (Not mushroom type)
- Cast metals used shall conform to the following specification:
 Alumogrit® (Abrasive cast aluminum): No. 43 secondary ingot; low copper content; corrosion resistant.
 Ferrogrit® (Abrasive cast iron): Class 20 iron; high silicon; machinable; hypereutectic.
- Any holes or countersinks shall be machine made. Screwheads shall not protrude above tread surface.
- All metal types shall have shot blasted finish; Ferrogrit® treads shall have one coat shop-black paint.
- Cross hatching and fluting shall be 1/16 inch deep minimum and shall be clean and well defined.
- Nosings shall terminate not more than 4" from ends of steps for poured concrete stairs; for concrete filled steel pan stairs, nosings shall be full length of steps less 1/8 inch clearance.

FOR MISCELLANEOUS USES



TYPE 110

Rounded edges

Standard thickness - 5/16"

Standard widths - 3", 4" and 6"

DRAWING NOT TO SCALE

Rounded edges. Chief uses: expansion joint covers, platforms around machinery, deck treads

FASTENERS: Type 110 is available with the following types of anchors: Wing Anchors Nuts & Bolts, Concealed Integral Anchors, Screws & Expansion Shields, Tapcon Screws, Wood Screws

LENGTHS: Lengths are to order up to 8'6" maximum in one piece in Alumogrit®, up to 6'0" in one piece for Ferrogrit®. Lengths over maximum will be made in equal sections

GUIDELINES FOR THE INSTALLATION OF METAL SAFETY TREADS OR NOSINGS INTO NEW CONCRETE OR STEEL PAN FILLED STAIRS:

The use of very large aggregate in the concrete mix may make placement of the safety nosing difficult.

Safety nosing placement may be difficult in concrete with very low slump.

Place concrete into the stair forms or steel pans as quickly as possible; schedule pour so as to install the metal safety nosings quickly before the initial set of concrete occurs.

Puddle the concrete, tamp the safety nosings to insure proper concrete formation around the anchors.

Remove protective tape (if used) as soon as practical.

Order nosings or treads well in advance of the pour or installation date.

Close stairway after pour; permit no use for 24 hours.

WOOSTER PRODUCTS INC, 1000 SPRUCE ST., WOOSTER, OH 44691

Toll Free: 800-321-4936

Phone: 330-264-2844

Fax: 330-262-4151

Website: <http://www.wooster-products.com>

E-mail: sales@wooster-products.com